

Benchmarking Indicators



Allison Quaid

**International Council for Local
Environmental Initiatives (ICLEI)**

aquaid@iclei.org

**Work with US local governments,
coaching them towards
sustainability**

Benchmarking Indicators

Criteria

✓ **Normalize units**



–e.g. lbs./person/day or
lbs./person/year, modal split for
work trips versus all trips.

✓ **Data widely and consistently
measured**

–e.g. Census data.

Benchmarking Indicators

- ✓ **Positive measure of sustainability**
- ✓ **Climate and Industry specific**
- ✓ **Select universally “essential” sustainability criteria**
- ✓ **Acceptable versus desirable indicator**

Benchmarking Indicators
Environmental Indicators



- **Modal spilt of commuters**
 - % of population that has access to transit and modal spilt (desirable)
- **Healthy Air Quality Days (EPA defined)**

Benchmarking Indicators
Environmental Indicators



- **Carbon dioxide emissions per capita**
- **Potable water usage per capita**
 - **Aquifer recharge rate (desirable)**
- **Acreage of parkland per 1,000 residents**

Benchmarking Indicators
Environmental Indicators



- **Recycling rate per capita**
 - **Diversion rate of waste (desirable)**
- **% of renewable energy usage**

Benchmarking Indicators
Social Indicators



- **Feeling of safety in community based on survey**
- **Asthma rate in children and adults over time**
- **Literacy rate**

Benchmarking Indicators
Social Indicators



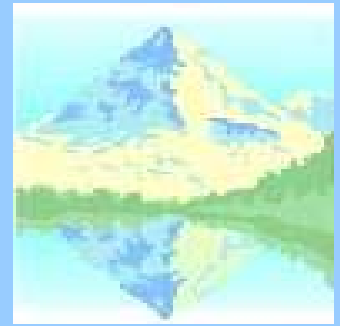
- **Volunteer rate**
- **Level of educational attainment**
- **Racial/gender diversity on council in proportion to population demographics**

Benchmarking Indicators
Economic Indicators



- **% of residents earning a living wage**
- **Children not in poverty**
- **% of residents paying more than 35% of income on home, renter more than 30%**
- **Businesses practicing green business practices**

Benchmarking Indicators
Real World Examples



Potable Water Usage in 2001, per capita residential

- **Oakland, CA:** **68 gal/person/day**
- **Brookline, MA:** **85 gal/person/day**
- **Fort Collins, CO:** **120 gal/pers/day**

Benchmarking Indicators
Real World Examples



Acres of Local Parkland to 1,000 Residents

- Oakland, CA: 1.33 acres/1,000**
- Salt Lake City: 1.24 Acres/1,000**
- Fort Collins, CO: 11.1 acres/1,000**



Benchmarking Indicators
Real World Examples



Children Not Living in Poverty (2000)

- **Oakland, CA: 72%**
- **Salt Lake City, UT: 81%**
- **Brookline, MA: 95%**
- **Fort Collins, CO: 92%**

Benchmarking Indicators
Real World Examples



Level of Education in Community, Hold High School Degree/Bachelor's

- **Oakland, CA:** 74% / 31%
- **Brookline, MA:** 96% / 77%
- **Fort Collins, CO:** 94% / 48%
- **SLC, UT:** 83% / 35%

Benchmarking Indicators
Real World Examples

Lesson?

- **Need to put indicators into context, so avoid inappropriate targets.**

Benchmarking Indicators
Economic Indicators



- **Economic income**
- **Child poverty**
- **Housing Affordability**
- **Sustainable Economy**
- **Green business practices**

Benchmarking Indicators
Social Indicators



- **Safety**
- **Health**
- **Education**
- **Racial/Gender Equality**

Benchmarking Indicators
Environmental Indicators



- **Air Quality**
- **Energy Usage**
- **Greenhouse Gas Emissions**
- **Open Space**
- **Transportation**
- **Water Usage**
- **Waste Generation and Recycling**